

PROTECTOWIRE[®]
FireSystems
Powered by PlanckVision[®]



Thermal Imaging Cameras

Protectowire offers thermal imaging solutions for fire prevention and 24/7 monitoring of industrial, commercial, and mission critical applications.

When used for fire prevention the thermal cameras can assist in locating hot spots before an over-heat condition or fire occurs. Knowing that a piece of equipment or a process is starting to fail provides time to respond to the event and implement a mitigation plan. Thermal cameras can help protect your assets and prevent the destruction of goods and loss of life by alerting personnel of abnormal heat conditions before a fire erupts.

These thermal cameras can be integrated into an existing BMS, SCADA, or other facility management systems. Unlike traditional flame detectors, these thermal cameras are designed to alert prior to the presence of smoke or flame. Integrating thermal cameras into these systems provides active monitoring of your environment.

Sensing thermal energy prior to spontaneous combustion of a material is a very basic fire prevention science. Thermal cameras are designed to monitor surface temperatures and can be configured to alert on a specific temperature setting below the ignition temperature of a material.

Whether the thermal cameras are used for fire prevention, inspections or pre-fire condition monitoring, each camera can be easily integrated into existing facility infrastructure to provide 24/7 monitoring. Each camera provides both quality thermal imaging with super-resolution display technology as well as high quality video. Both the thermal imaging as well as the high-resolution video can be viewed locally on-site or remotely. Although most facilities are equipped with fire alarms and sometimes suppression systems, these systems only initiate when a fire is detected. Thermal cameras allow the constant monitoring of material and surface temperatures. Even in the most challenging environments for conventional fire detection, thermal cameras can be used to monitor the hazard area.

Protectowire offers two thermal cameras with thermal and visible sensors. The Protectowire thermal cameras are extremely quick and easy to install. There are multiple advantages of this technology:

- Early warning for a fast reaction time
- Highly accurate temperature readings for a low rate of false alarms
- Integrates with other systems such as Facility Safety Instrumented System (FSIS), Plant Supervisory Control and Data Acquisition (SCADA)
- Continuous monitoring for 24/7 protection
- Easy to install and maintain
- Reduces downtime and repair costs
- Access all data and camera feed from any device
- Automatic system updates
- Can provide outputs for mass emergency notifications

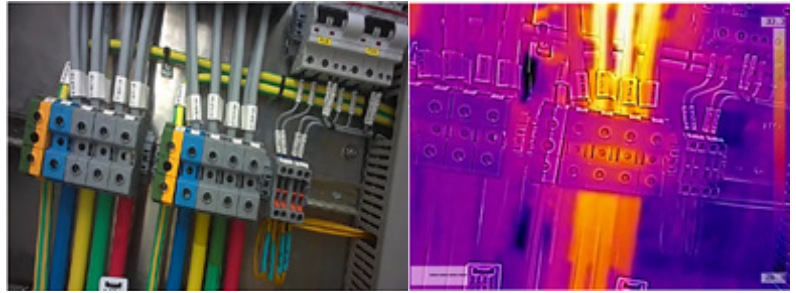
Monitor hazards remotely with Protectowire's thermal imaging cameras for early warning notification and fire prevention.

- Energy Storage and Distribution
- Waste & Recycling Centers
- Warehouses
- Petroleum, Oil & Gas Processing
- Process & Manufacturing Areas
- Critical Infrastructure
- Pulp and Paper Mills
- Transportation Applications

If you are looking for active thermal detection and/or monitoring, we have a solution. Since 1938, Protectowire has been detecting thermal events and providing solutions.

PWTC20F

The mini dual-vision thermal imaging camera is a product specially designed for real-time temperature monitoring of assets in close quarters, such as inside equipment cabinets. It has a built-in HD visible camera, two LED visible lights, and an infrared thermal imaging core to support 24-hour non-contact online temperature monitoring and visible monitoring. It supports over-temperature alerts for 12 separate regions, intrusion alarm, and other functions.



Camera Features:

- With super-resolution display technology, thermal images are provided in 640x480 resolution
- Supports clearer image details in Fusion / Full-Color / HD / HD-Fusion display modes
- Wide field of view thermal imaging (up to 95° without fusion), provides for better monitoring in narrow cabinets
- Supports full screen, point, line and area temperature measurements, as well as temperature measurement shielding of unwanted regions
- Supports multiple customizable temperature alert methods such as: above range, below range, within range, and outside range
- Real-time analytics are running on the camera head, reducing loads on the server
- Thermal imaging supported by 18 color palettes such as black & white hot, iron red and rainbow, etc.
- 2MP visible camera with two visible LED illuminators for dark environments
- Supports H264 and H265 video compression algorithms
- Supports RTSP, ONVIF, MODBUS and other common protocols
- Restful API available for secondary development

PWTC100

Fixed-mount Temperature Monitoring Camera with Thermal and Visible Sensors

Designed for 24/7 thermal monitoring of all your critical assets. The PWTC100 identifies issues before they become costly failures, preventing downtime, and enhancing worker safety. This affordable value-added camera offers more than twice the number of thermal pixels, almost three times the frame rate for streaming thermal video, and an improved high temperature (low gain) accuracy, as compared to other cameras in its class. PWTC100 comes with a TF card interface on the camera head that supports up to 128G memory for storage of alarm event images.

Camera Features:

- Supports widely adopted IIoT protocols
- Perfect for indoors and outdoors with supplied sun shield
- Global temperature monitoring with user defined zones
- Security area-monitoring features
- Supports user defined alarm protocols
- Alert activated relays and external sensor monitoring

